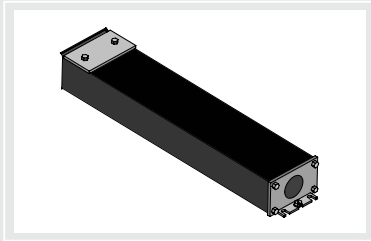


Product Name	Driver Type	Power	Wattage	Voltage
TBECODC = T-BAR ECO DC Power Supply	PS = Non Dimmable DIM = 1% Dimmable 0-10 VDC	HP = High Power	100W = 96W	UNV = Universal 100-277V

WARRANTY: 5 years

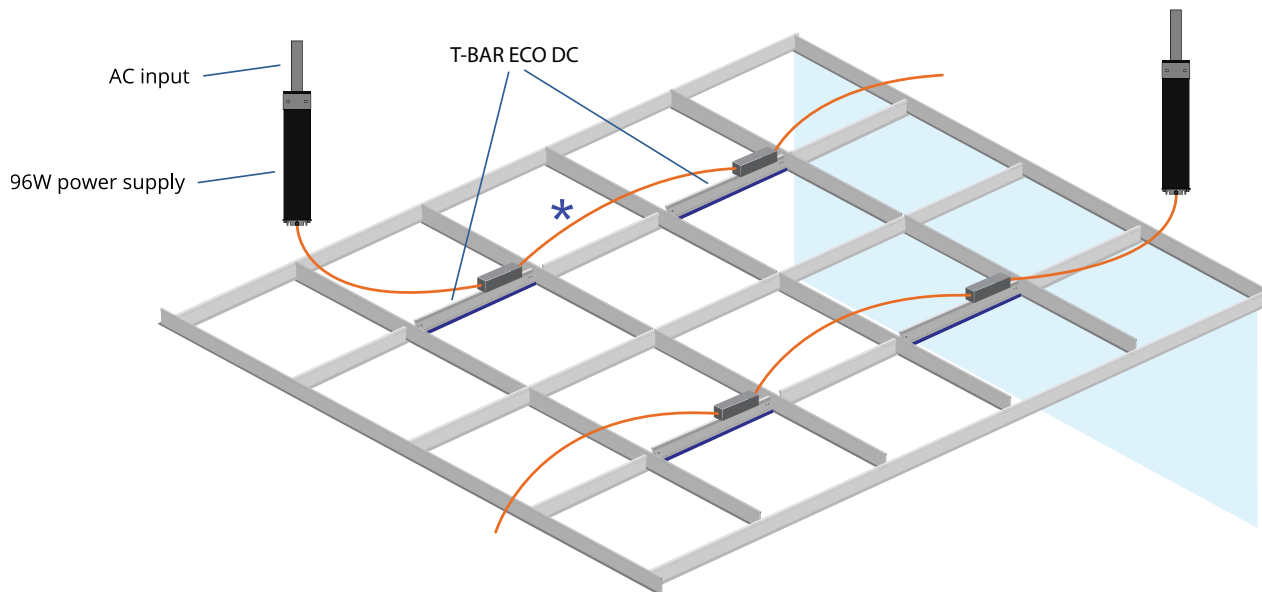
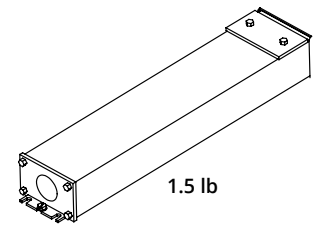
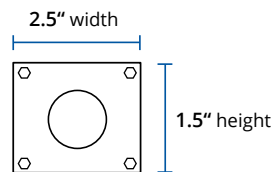
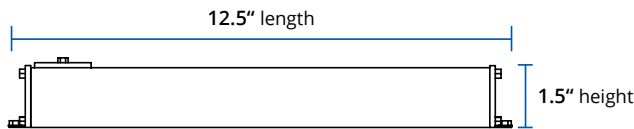


24VDC LED Driver 96W Power Supply

0-10 VDC dimmable and non dimmable

T-BAR ECO DC modules can be parallel connected up to 12 linear feet max per power supply. 96W max single output Class 2 power supply, universal input voltage 100-277Vac output 24VDC. This power supply includes a JB compartment for AC input direct wiring with metal conduit. Available with 0-10Vdc nominal 1% dimming option.

96W Power Supply dimensions



Secure LED driver to a remote location without the need of a NEMA box.

Wiring Chart:

Gauge	Length
18 (0.75 mm ²)	30ft (9m) maximum
16 (1.5 mm ²)	45ft (14m) maximum
14 (2.0 mm ²)	70ft (21m) maximum

* Cabling for low voltage connections between fixtures, by others.